



# ODMT : Setting up Western Shelter Tents

Oregon Disaster Medical  
Team

# ODMT : Setting up Western Shelter Tents

- Picture
  - WS Tower components
  - Large tents will have 9 bags
    - 2 Tower bags
    - 2 Doors
    - 1 Roof
    - 1 Floor
    - 1 Siding
    - 2 Insulation
    - Lighting, wiring



# ODMT : Setting up Western Shelter Tents

- Components of “big tent”
- Picture
  - All components of large tent
  - Note
    - 3 towers
    - Top (roof) sidebars
    - Bottom sidebars



# ODMT : Setting up Western Shelter Tents

- Picture
  - Assembling first tower
- Process
  - Hold tower in vertical position
  - Remove strap



# ODMT : Setting up Western Shelter Tents

## ■ Picture

- Tower with roof struts extended

## ■ Process

- Un-click top buttons
- Extend roof struts
- Note wall struts still locked



# ODMT : Setting up Western Shelter Tents

- To free up wall struts
  - Find bottom locking pin



# ODMT : Setting up Western Shelter Tents

- Process
  - Removing bottom locking pin



# ODMT : Setting up Western Shelter Tents

- Picture
  - Roof unit with
    - Struts extended
    - Wall struts unlocked





# ODMT : Setting up Western Shelter Tents

## ■ Picture

- Tower with legs extended
- Bottom side bars ready to assemble

## ■ Process

- Identify all horizontal roof strut bars
- Lay out roof strut bars in corresponding position
- Velcro side out



# ODMT : Setting up Western Shelter Tents

- Picture
  - Large tents
    - Towers extended
    - Bottom sidebars in place



# ODMT : Setting up Western Shelter Tents

- Picture
  - Frontal view
    - Towers extended
    - Legs unpinned
    - Bottom sidebars are assembled.



# ODMT : Setting up Western Shelter Tents

- Picture
  - Middle tower being attached.



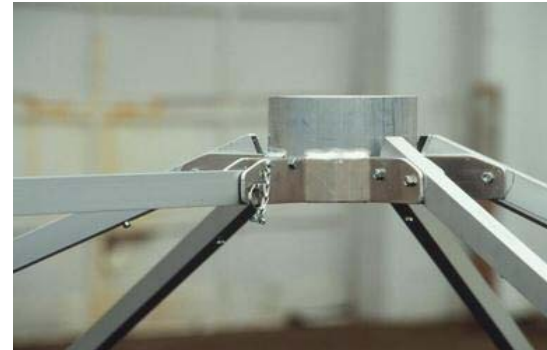
# ODMT : Setting up Western Shelter Tents

- Picture
  - Closeup of middle tower assembly being locked into place
- Process
  - Place middle tower between two towers
  - Identify locking pin locations on two end towers
  - Lock middle tower horizontal struts to end towers



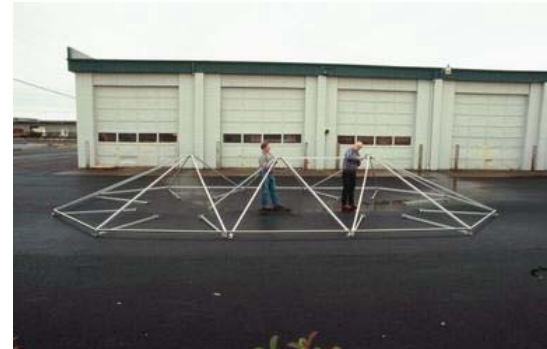
# ODMT : Setting up Western Shelter Tents

- Picture
  - Final appearance of middle tower
  - Horizontal bar locked into place



# ODMT : Setting up Western Shelter Tents

- Picture of middle tower assembly attachment
- Note
  - Bottom assembly horizontal struts are attached.
  - Roof horizontal struts of middle tower being attached to end tower.



# ODMT : Setting up Western Shelter Tents

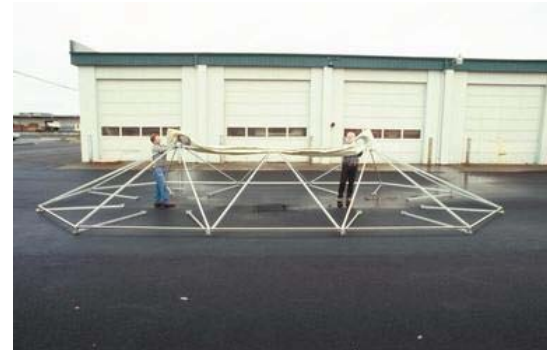
- Roof assembly
  - Finished product
  - Note
    - Two end towers
    - One middle tower
    - Horizontal struts attached
    - Linkage struts attached.





# ODMT : Setting up Western Shelter Tents

- Picture
  - Roof being unfurled
- Process
  - Place roofing material across top horizontal middle struts
  - Unfurl roofing material
  - Place roofing material over center of end struts
  - Attach Metal Tower cap over mid portion of tower end structure



# ODMT : Setting up Western Shelter Tents

- Picture
  - Demonstration of Cap being placed (this is incorrect, roof should be attached first)



# ODMT : Setting up Western Shelter Tents

- Picture
  - Roof being further unfurled



# ODMT : Setting up Western Shelter Tents

- Picture
  - Roof unfurled
  - Legs being lifted into position
- Process
  - The vertical struts are ready to be extended into the horizontal position.
  - 1/2 side done at one time
  - Roof is lifted and stabilized by personnel
  - Vertical wall struts locked into place.



# ODMT : Setting up Western Shelter Tents

- Picture
  - Partial assembly
  - 1/2 tent in vertical position



# ODMT : Setting up Western Shelter Tents

- Picture
  - All legs locked and in vertical position



# ODMT : Setting up Western Shelter Tents

- Picture
  - Fasten bottom horizontal bars
- Process
  - Attach all bottom horizontal bars of the wall struts.



# ODMT : Setting up Western Shelter Tents

- Picture
  - Attaching doors on each end
- Process
  - Attach door to each end in the center.





# ODMT : Setting up Western Shelter Tents

- Picture
  - Doors attached.
  - Note center attachment



# ODMT : Setting up Western Shelter Tents

## ■ Picture

- Tent siding being placed
- Note
  - Right of door
  - Left of door.

## ■ Process

- Attach wall siding to tent starting with each side of door.



# ODMT : Setting up Western Shelter Tents

## ■ Picture

- Process of unfolding siding and attaching it to velcro of roof horizontal bars.

## ■ Process

- Attach siding to horizontal roof bar velcro.



# ODMT : Setting up Western Shelter Tents

## ■ Picture

- Attempting to “squeeze and pull the two sides together” for the finished product.

## ■ Process

- Complete attachment of siding around tent
- Join right of door and left of door siding and join velcro join strip.



# ODMT : Setting up Western Shelter Tents

- Picture
  - Attaching the roof to the side velcro
- Process
  - Attach roof velcro to wall siding panel velcro.



# ODMT : Setting up Western Shelter Tents

- The finished product



# ODMT : Setting up Western Shelter Tents

- Sky view
  - The finished product

